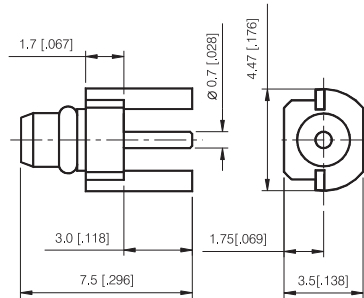
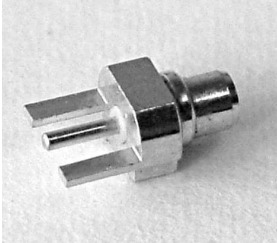


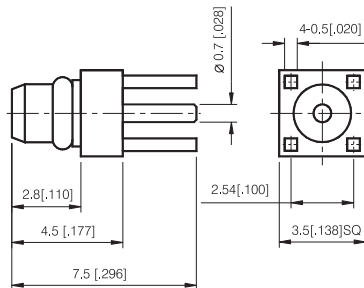
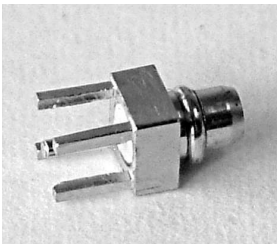
# MMCX Series

## PRINTED CIRCUIT BOARD



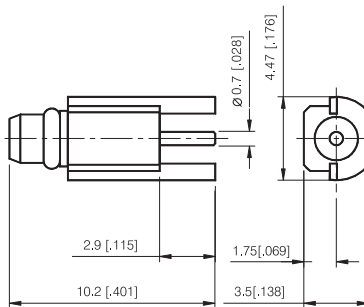
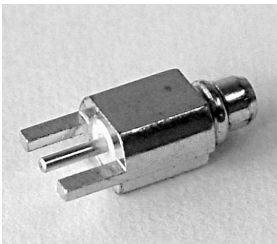
### EDGE CARD VERTICAL MOUNT PLUG FOR P.C. BOARD

P/N	Cable Group	Impedance
108-M610	N/A	50



### STRAIGHT PLUG FOR P.C. BOARD

P/N	Cable Group	Impedance
108-M620	N/A	50

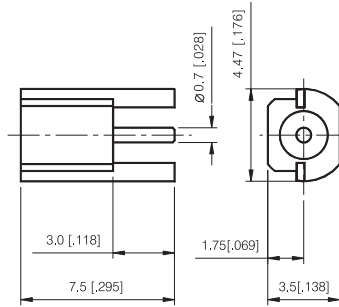
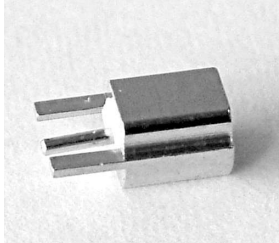


### EDGE CARD VERTICAL MOUNT PLUG FOR P.C. BOARD

P/N	Cable Group	Impedance
108-M630	N/A	50

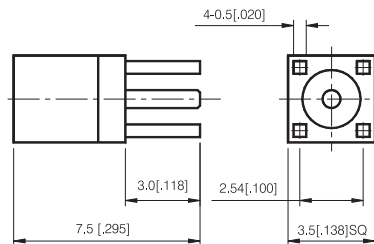
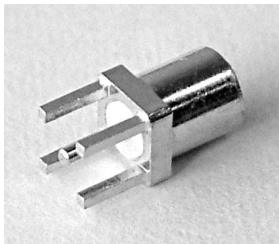
# MMCX Series

## PRINTED CIRCUIT BOARD



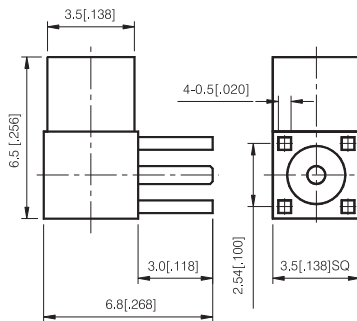
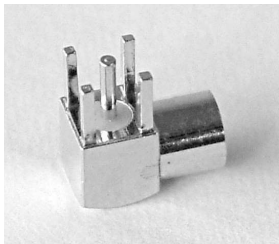
### EDGE CARD VERTICAL MOUNT JACK FOR P.C. BOARD

P/N	Cable Group	Impedance
108-F610	N/A	50



### STRAIGHT JACK FOR P.C. BOARD

P/N	Cable Group	Impedance
108-F620	N/A	50

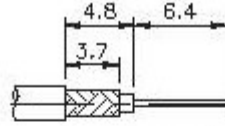


### RIGHT ANGLE JACK FOR P.C. BOARD

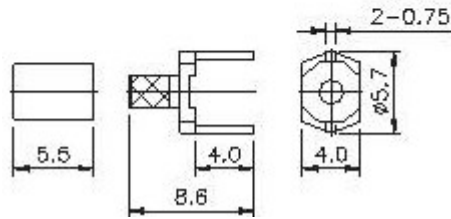
P/N	Cable Group	Impedance
108-F630	N/A	50

# MMCX Series

## PRINTED CIRCUIT BOARD

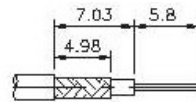


RECOMMENDED  
CABLE STRIPPING DIM'S

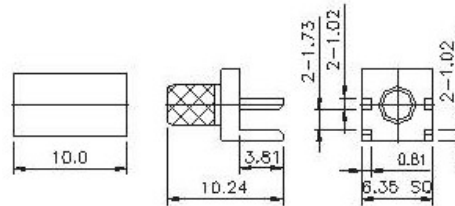


### STRAIGHT TERMINATORS P.C.B.

P/N	Cable Group	Impedance
108-F640	09	50
	28	50



RECOMMENDED  
CABLE STRIPPING DIM'S



### STRAIGHT CRIMP TYPE END LAUNCH

P/N	Cable Group	Impedance
108-F650	01	50
	09	50
	28	50