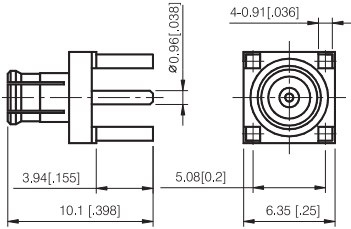
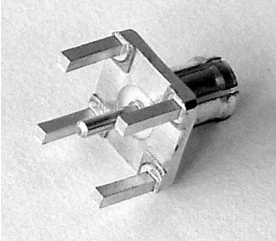


# MCX Series

## PRINTED CIRCUIT BOARD

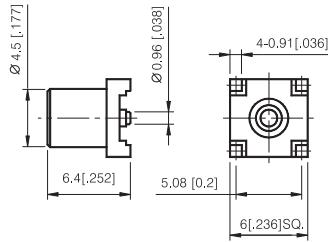
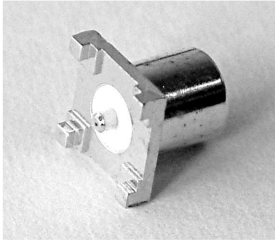


### STRAIGHT PLUG FOR PRINTED CIRCUIT BOARD

P/N	Cable Group	Impedance
107-M610	N/A	50

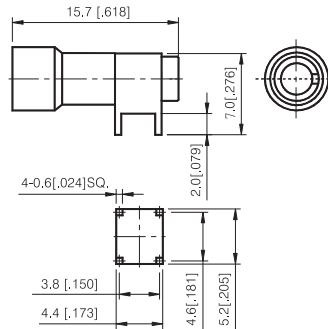
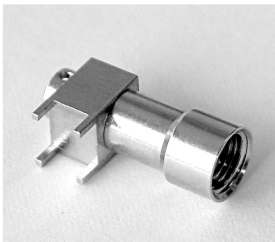
# MCX Series

## PRINTED CIRCUIT BOARD



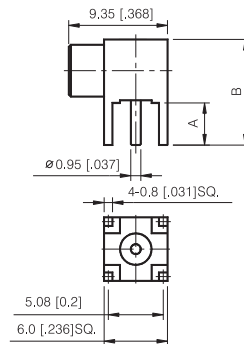
### STRAIGHT JACK FOR PRINTED CIRCUIT BOARD

P/N	Cable Group	Impedance
107-F621	N/A	50



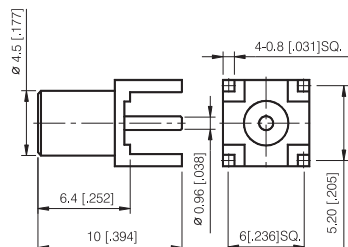
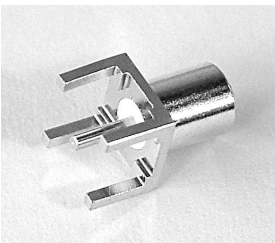
### RIGHT ANGLE JACK FOR PRINTED CIRCUIT BOARD

P/N	Cable Group	Impedance
107-F650	N/A	50



### RIGHT ANGLE JACK FOR PRINTED CIRCUIT BOARD

P/N	A	B	Impedance
107-F680	4	10	50
107-F681	2	8	50



### STRAIGHT JACK FOR PRINTED CIRCUIT BOARD

P/N	Cable Group	Impedance
107-F690	N/A	50