



## Description

7/16 connectors are designed for use in high power communication systems. These connectors perform exceptionally well in multi-channel cellular systems where power levels approximate 100 watts per channel.

## Applications

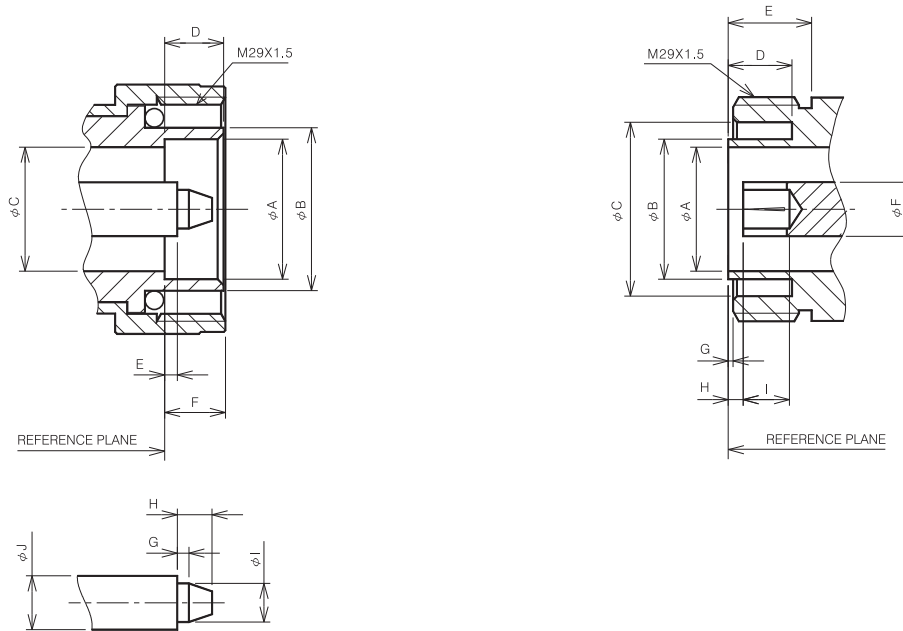
- Base Stations
- Antennas
- Broadcast Communication Systems
- Jumper Cables

## Features

- Low PIM and low VSWR for improved system performance.
- Self flaring for ease of installation.
- Waterproof per IEC 169, IP68.
- Limited internal junctions reduce sources of IMD.
- Silver plated contacts and silver or white bronze plated bodies deliver high conductivity and corrosion resistance.

# 7/16 DIN Series

## Interface Mating Dimensions:



### PLUG

Letter	Millimeters	
	Minimum	Maximum
A	18.03	18.21
B	20.60	21.40
C	15.85	16.25
D	7.00	8.00
E	1.47	1.77
F	7.00	9.00
G	1.40	1.60
H	-	4.50
I	4.96	5.04
J	6.97	7.03

### JACK

Letter	Millimeters	
	Minimum	Maximum
A	15.85	16.25
B	-	18.00
C	22.10	22.90
D	8.10	-
E	10.00	-
F	6.97	7.03
G	0.50	0.70
H	1.77	2.07
I	5.00	-

NOTE 1 : I.D. TO MEET VSWR AND CONTACT RESISTANCE WHEN MATED WITH 4.96/5.04 MM DIA. PIN.

# 7/16 DIN Series

**Electrical :**

Impedance	50 ohm
Frequency Range	0 to 7.5 GHz
Working Voltage	2700 VRMS max. at sea level
Dielectric Withstanding Voltage	4000 VRMS min. at sea level
VSWR	Straight :1.3 max. Right Angle :1.5 max.
Contact resistance	Center Contact : 0.4 milliohms max. Outer Contact : 0.2 milliohms max.
Insulator resistance	5000 megohms min.

**Material :**

Parts Name	Material	Finish
Body, Metal Parts	Brass per QQ-B-626	Silver or White Bronze
Center Contacts	Male:Brass per QQ-B-626	Silver
	Female:Beryllium-Copper per QQ-C-530	Silver
Insulation	PTFE	None
Gasket	Silicone rubber	None
Crimp Ferrule	Annealed copper	Silver

**Mechanical :**

Coupling Nut Retention	225 lbs. max.
Coupling Proof Torque	310 in-lbs. max.
Contact Retention	4 lbs. max.
Durability (Mating)	500 cycle min. (for Beryllium copper female contact only)