

# 1.6/5.6 DIN CONNECTOR



## Description

1.6/5.6 coaxial connectors are miniature 75 ohm units with threaded coupling mechanisms which provide positive mating. The compact design of the 1.6/5.6 permits dense connector packing, making these connectors ideally suited to applications where space limitation is an important factor.

## Applications

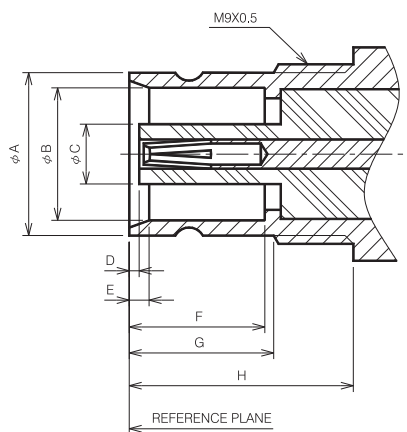
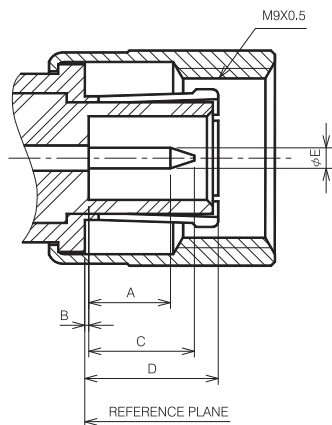
- Telecommunications
- Switching equipment and routers

## Features

1.6/5.6 connectors meet IEC 169-13, DIN 47295 and NFC 93-570 international specifications. 1.6/5.6 plugs and bulkhead jacks are available as crimp termination types ensuring high reliability in connector assembly and a lower cost installation method.

# 1.6/5.6 DIN CONNECTOR

## Interface Mating Dimensions:



### PLUG

Letter	Millimeters	
	Minimum	Maximum
A	3.90	4.30
B	-	0.15
C	-	5.50
D	-	6.60
E	1.00	1.06

### JACK

Letter	Millimeters	
	Minimum	Maximum
A	8.10	8.25
B	6.60	6.69
C	-	2.80
D	0.25	-
E	6.70	-
F	7.00	7.50
G	9.70	-

NOTE1:I.D.TO MEET VSWR AND CONTACT RESISTANCE WHEN MATED WITH 1.0/1.06 MM DIA. PIN.

# 1.6/5.6 DIN CONNECTOR

## Electrical :

Impedance	75 ohm
Frequency Range	0-1 GHz
Working Voltage	335 VRMS max. at sea level
Dielectric Withstanding Voltage	1,000 VRMS min. at sea level
VSWR	Straight : 1.3 max. Right Angle : 1.5 max.
Contact resistance	Center Contact : 4 milliohms max. Outer contact : 2 milliohms max.
Insulator resistance	1,000 megohms min

## Material

Parts Name	Material	Finish
Male (Plug)	Body/Metal parts :	Nickel
	Brass per QQ-B-626	
	Outer Contacts :	Gold
	Phosphor Bronze per QQ-B-750	
Female (jack)	Center Contact :	Gold
	Beryllium-Copper per	
	Body/Metal parts :	Gold/Nickel
Insulation	Brass per QQ-B-626	
	Center Contacts :	Gold
Crimp Ferrule	Beryllium Copper per QQ-C-530	
Insulation	PTFE	None
Crimp Ferrule	Annealed copper	Nickel or Gold per requirement

NOTE:Other Material/Finish is Available on Request.

## Mechanical :

Coupling Nut Retention	2.3 lbs. max.
Coupling Proof Torque	2.3 in-lbs. max.
Contact Retention	4 lbs. max.
Durability (Mating)	500 cycle min.(for Beryllium copper female contact only)