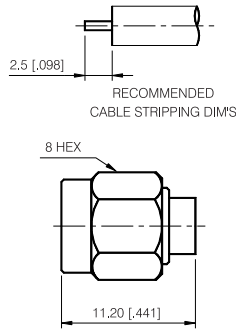


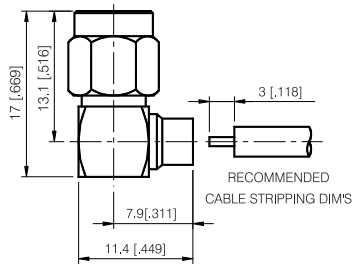
SMA Series

DIRECT SOLDER FOR SEMI-RIGID CABLE



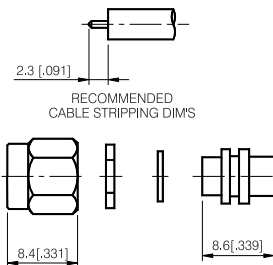
STRAIGHT CABLE PLUG-WITH CONTACT

P/N	Cable Group	Impedance
101-M110	24	50
101-M111	25	50



RIGHT ANGLE CABLE PLUG

P/N	Cable Group	Impedance
101-M120	24	50
101-M121	25	50
101-M122	27	50

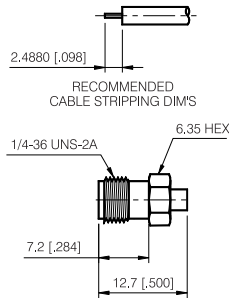


STRAIGHT CABLE PLUG-WITHOUT CONTACT

P/N	Cable Group	Impedance
101-M130	24	50

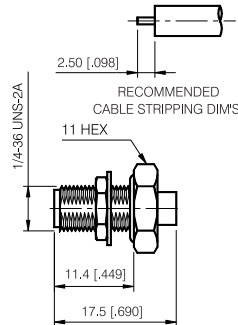
SMA Series

DIRECT SOLDER FOR SEMI-RIGID CABLE



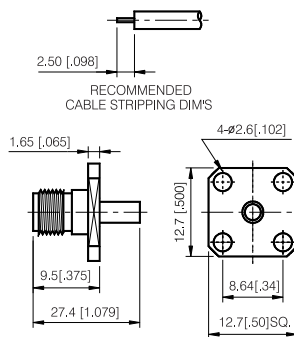
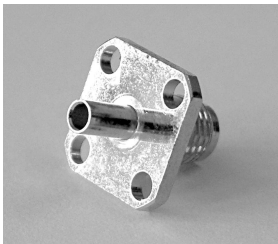
STRAIGHT CABLE JACK

P/N	Cable Group	Impedance
101-F110	24	50
101-F111	25	50



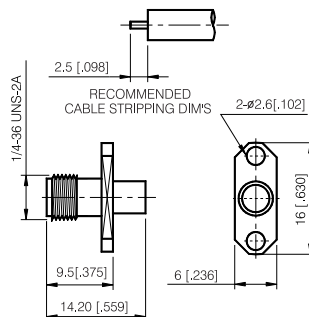
BULKHEAD FEED THROUGH CABLE JACK

P/N	Cable Group	Impedance
101-F130	24	50
101-F131	25	50



PANEL MOUNT CABLE JACK-4 HOLE SQUARE FLANGE

P/N	Cable Group	Impedance
101-F140	24	50
101-F141	25	50

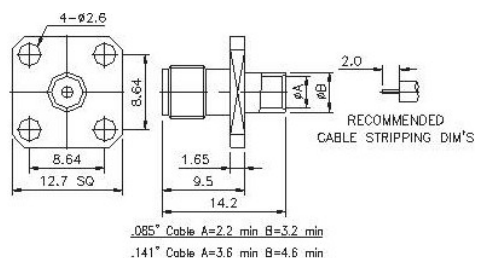


PANEL MOUNT CABLE JACK- 2 HOLE SQUARE FLANGE

P/N	Cable Group	Impedance
101-F150	24	50
101-F151	25	50

SMA Series

DIRECT SOLDER FOR SEMI-RIGID CABLE



PANEL MOUNT JACK -4 HOLE FLANGE SEMI-RIGID

P/N	Cable Group	Impedance
101-F160	24	50
	25	50