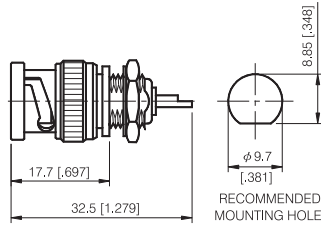


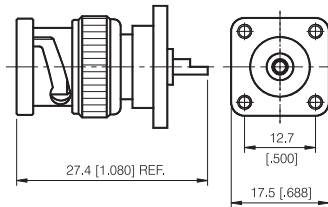
# BNC Series

## BULKHEAD MOUNT. SOLDER POT TERMINAL



### BULKHEAD RECEPTACLE PLUG

P/N	Cable Group	Impedance
111-M840	N/A	50
111-M841	N/A	75

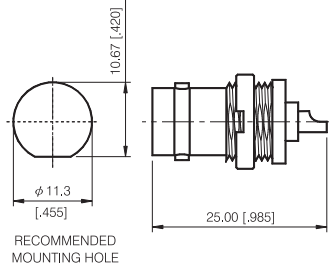


### PANEL RECEPTACLE PLUG

P/N	Cable Group	Impedance
111-M860	N/A	50

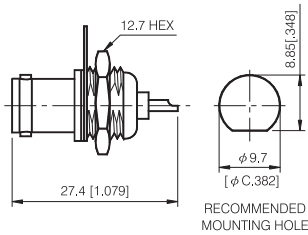
# BNC Series

## BULKHEAD MOUNT. SOLDER POT TERMINAL



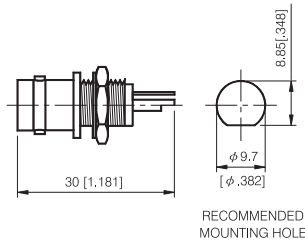
### BULKHEAD RECEPTACLE JACK

P/N	Cable Group	Impedance
111-F810	N/A	50



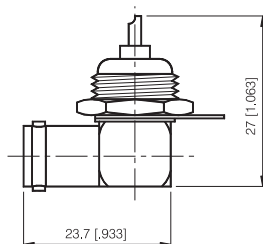
### BULKHEAD RECEPTACLE JACK

P/N	Cable Group	Impedance
111-F820	N/A	50



### BULKHEAD RECEPTACLE JACK

P/N	Cable Group	Impedance
111-F830	N/A	50

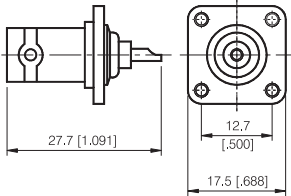


### RIGHT ANGLE RECEPTACLE JACK

P/N	Cable Group	Impedance
111-F840	N/A	50

# BNC Series

## BULKHEAD MOUNT.SOLDER POT TERMINAL



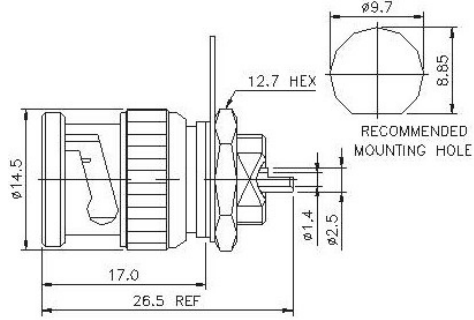
### PANEL RECEPTACLE JACK

P/N	Cable Group	Impedance
111-F850	N/A	50

# BNC Series

## BULKHEAD MOUNT. SOLDER POT TERMINAL

---



### PLUG SOLDER BULKHEAD

P/N	Cable Group	Impedance
111-M820	N/A	50