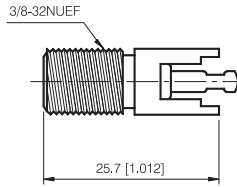
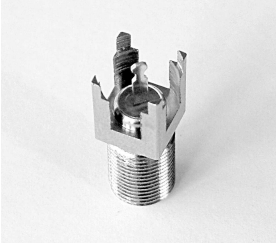


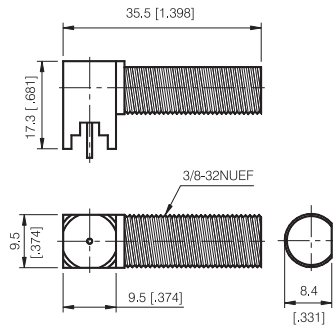
# F Series

## PRINTED CIRCUIT BOARD



### STRAIGHT JACK FOR PRINTED CIRCUIT BOARD

P/N	Cable Group	Impedance
114-F620	N/A	75

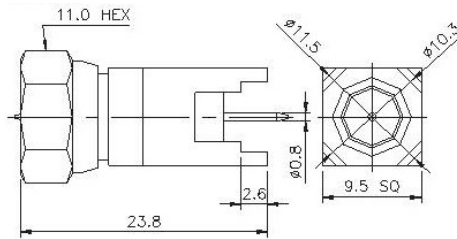


### RIGHT ANGLE JACK FOR PRINTED CIRCUIT BOARD

P/N	Cable Group	Impedance
114-F630	N/A	75

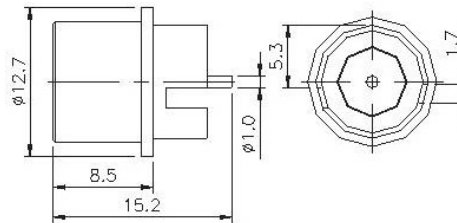
# F Series

## PRINTED CIRCUIT BOARD



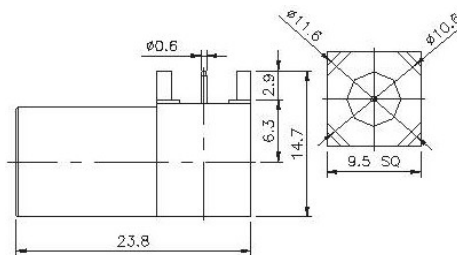
### PLUG P.C.B. MOUNT

P/N	Cable Group	Impedance
114-M620	N/A	75



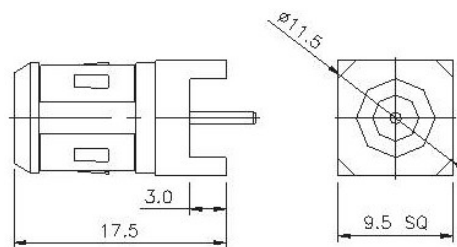
### PLUG P.C.B. MOUNT

P/N	Cable Group	Impedance
114-M630	N/A	75



### RIGHT ANGLE PLUG P.C.B. MOUNT

P/N	Cable Group	Impedance
114-M640	N/A	75



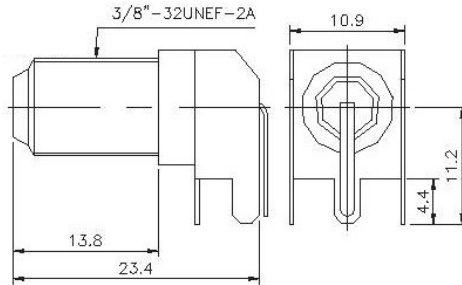
### JACK P.C.B. MOUNT

P/N	Cable Group	Impedance
114-F640	N/A	75

# F Series

## PRINTED CIRCUIT BOARD

---



### JACK P.C.B. MOUNT

P/N	Cable Group	Impedance
114-F650	N/A	75