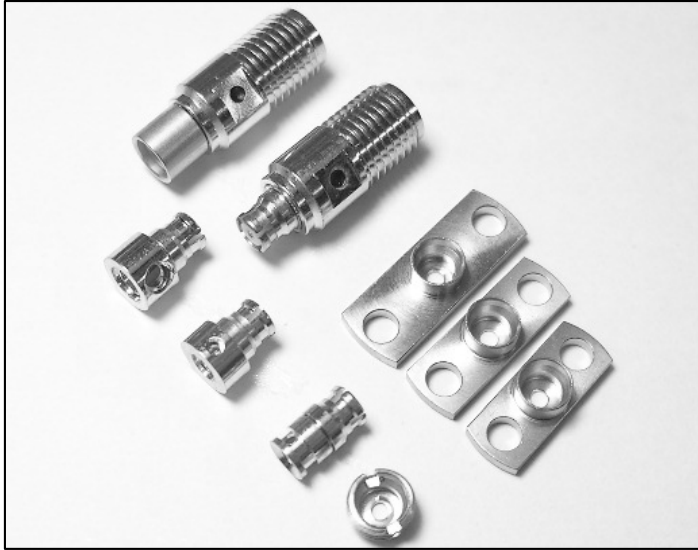


SMP Series

SMP



Description

The SMP interface is a subminiature interface in the same scale as MMCX connectors but offers a frequency range of DC to 65 GHz. It is commonly used in miniaturized high frequency coaxial modules and is offered in both push-on and snap-on mating styles.

Applications

- Aerospace
- Board to Board Interconnect
- Broadband
- Instrumentation
- Mil/Aero
- Optical Nodes and Routers
- Telecommunications

Features

- Designed to accommodate both radial and axial misalignment.
- Cable connector designs for both flexible and semi-rigid cables

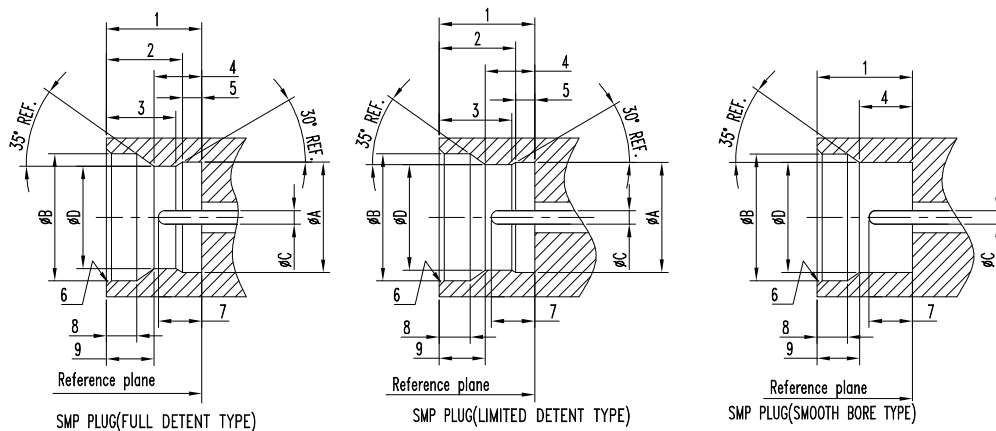
SMP - Specification

SMP bullet connectors at high frequencies up to DC to 40 GHz. The SMP bullet connector was developed to meet the need for a smaller high frequency compact design that incorporated ease of use and functionality.

The SMP bullet connector is the heart of this unique design. The bullet is designed to allow the joining of two RF Modules by captivating the bullet between the two shrouds. This mounting method allows for higher density of connectors and by design the SMP bullet connector allows for misalignment to compensate for tolerance stack up. With significant withdrawal forces on the full detent shroud the SMP connector has become a standard for quick and effective interconnects using both semi-rigid and flexible cables. The "Push-on" design allows the installer to mate connectors without the need for threads or wrenches. Today's industry requires both innovation and flexibility, and the SMP bullet connector meets that challenge.

Interface Mating Dimensions:

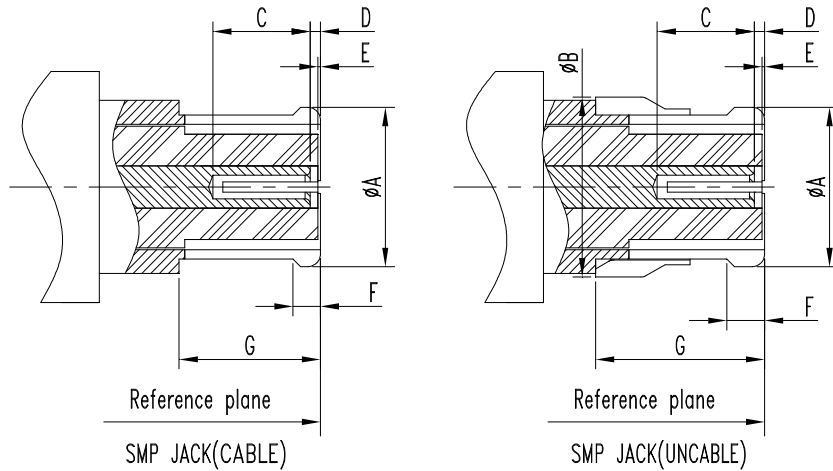
SMP PLUG CONNECTOR



Letter	FULL DETENT TYPE Millimeters(Inches)		LIMITED DETENT TYPE Millimeters(Inches)		SMOOTH BORE TYPE Millimeters(Inches)	
	Minimum	Maximum	Minimum	Maximum	Minimum	Maximum
ØA	3.15(.124)	3.20(.126)	3.15(.124)	3.20(.126)	N/A	
ØB	3.53(.139)	3.68(.145)	3.53(.139)	3.68(.145)	3.53(.139)	3.68(.145)
ØC	0.36(.014)	0.41(.016)	0.36(.014)	0.41(.016)	0.36(.014)	0.41(.016)
ØD	2.90(.114)	3.00(.118)	3.00(.118)	3.10(.122)	3.15(.124)	3.20(.126)
1	2.74(.108)	2.84(.112)	2.74(.108)	2.84(.112)	2.74(.108)	2.84(.112)
2	2.29(.090)	2.19(.086)	2.29(.090)	2.19(.086)	N/A	
3	1.98(.078)	2.08(.082)	1.98(.078)	2.08(.082)	N/A	
4	1.30(.051)	1.45(.057)	1.37(.054)	1.52(.060)	1.50(.059)	1.65(.065)
5	0.60(.0235)	0.52(.0205)	0.60(.0235)	0.52(.0205)	N/A	
6	0.07(.003)	0.20(.008)	0.07(.003)	0.20(.008)	0.07(.003)	0.20(.008)
7	1.14(.045)	1.40(.055)	1.14(.045)	1.40(.055)	1.14(.045)	1.40(.055)
8	0.84(.033)	0.94(.037)	0.84(.033)	0.94(.037)	0.84(.033)	0.94(.037)
9	1.40(.056)	1.45(.057)	1.40(.056)	1.45(.057)	1.40(.056)	1.45(.057)

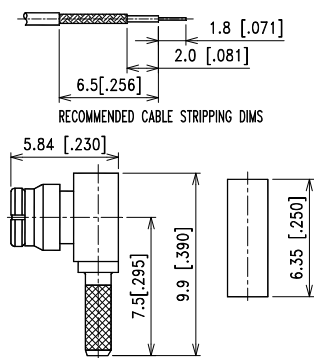
Interface Mating Dimensions:

SMP JACK CONNECTOR



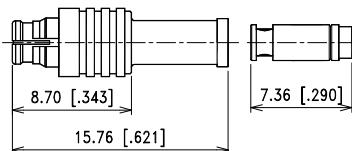
Letter	JACK(CABLE) Millimeters(Inches)		JACK(UNCABLE) Millimeters(Inches)	
	Minimum	Maximum	Minimum	Maximum
ϕA	-	3.43(.135)	-	3.43(.135)
ϕB	N/A		-	3.68(.145)
C	1.78(.070)	-	1.78(.070)	-
D	-	0.20(.008)	-	0.20(.008)
E	-	0.25(.010)	-	0.25(.010)
F	0.46(.018)	0.64(.025)	0.64(.025)	0.89(.035)
G	2.84(.112)	-	2.84(.112)	-

CRIMP ATTACHMENTS FOR FLEXIBLE CABLE



RIGHT ANGLE CRIMP JACK

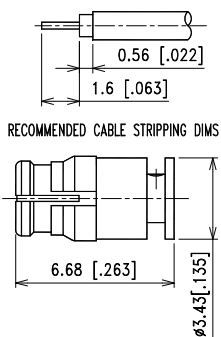
P/N	Cable Group	Impedance
145-F050	34	50



STRAIGHT CRIMP JACK

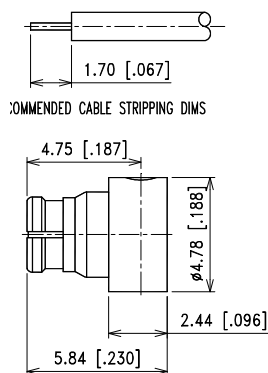
P/N	Cable Group	Impedance
145-F071	34	50

DIRECT SOLDER FOR SEMI-RIGID CABLE



STRAIGHT SOLDER TYPE CABLE JACK

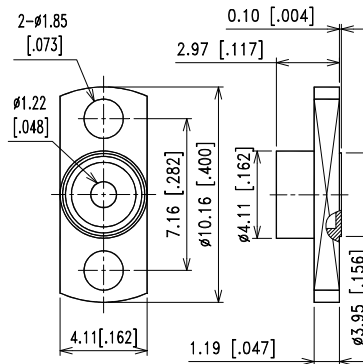
P/N	Cable Group	Impedance
145-F120	27	50
145-F140	25	50



RIGHT ANGLE SOLDER TYPE CABLE JACK

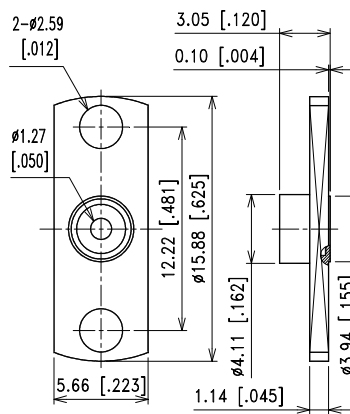
P/N	Cable Group	Impedance
145-F110	27	50
145-F130	25	50

FLANGE MOUNT SHROUD



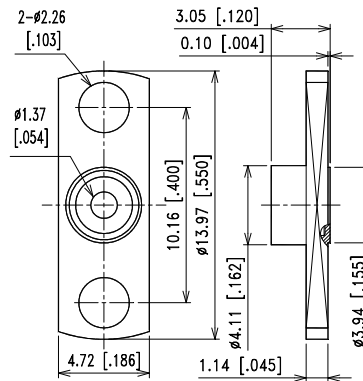
2-HOLE FLANGE MOUNT PLUG SHROUD -WITHOUT CONTACT

P/N	INTERFACE	Impedance
145-M310	FULL DETENT	50
145-M311	LIMITED DETENT	50
145-M312	SMOOTH BORE	50



2-HOLE FLANGE MOUNT PLUG SHROUD -WITHOUT CONTACT

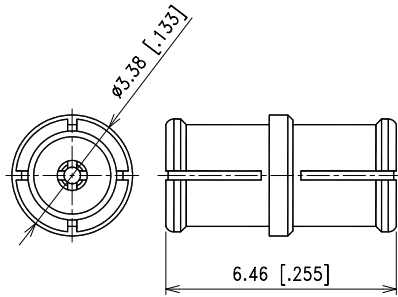
P/N	INTERFACE	Impedance
145-M330	FULL DETENT	50
145-M331	LIMITED DETENT	50
145-M332	SMOOTH BORE	50



2-HOLE FLANGE MOUNT PLUG SHROUD -WITHOUT CONTACT

P/N	INTERFACE	Impedance
145-M340	FULL DETENT	50
145-M341	LIMITED DETENT	50
145-M342	SMOOTH BORE	50

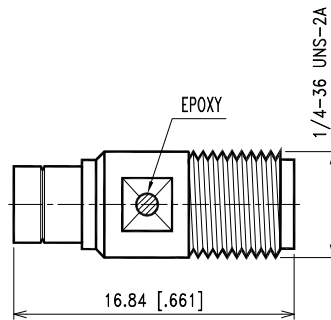
IN-SERIES ADAPTER



STRAIGHT JACK TO JACK ADAPTER

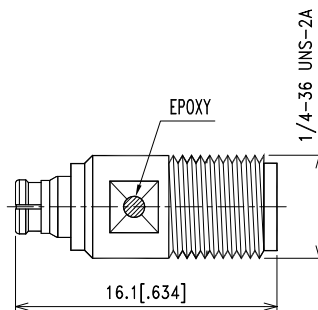
P/N	Cable Group	Impedance
145-A011	N/A	50

BETWEEN-SERIES ADAPTER



SMP PLUG TO SMA JACK ADAPTER

P/N	INTERFACE	Impedance
145-A035	SMOOTH BORE	50
145-A036	LIMITED DETENT	50
145-A037	FULL DETENT	50



SMP JACK TO SMA JACK ADAPTER

P/N	Cable Group	Impedance
145-A041	N/A	50